

# ASSEMBLY MANUAL



Olympic Series Kits

Get Out And Play

# Table of Contents

Site Selection and Planning.....	3
Tools Needed.....	4
Hardware & Parts.....	5 & 6
Sub Assemblies.....	7
Main Platform Assembly.....	8-10
Install the Rock Wall Trim Board.....	11
Add the Platform Roof.....	11
Install the Platform Safety Railing.....	12
Installing the Activity Arm.....	12
Assemble the Swing Beam Support.....	13
Assemble the Monkey Bar Ladder.....	14
Attach a Monkey Bar Swing Beam.....	15
Attaching the Play Accessories	
Install the 8 ft. Climbing Rope.....	16
Install a Slide.....	17
Fasten the Hand Safety Rail.....	17
Hang the Tire Swing.....	18
Install the Canvas Cover.....	18
Fasten the Rock Wall Rope.....	19
Installing the Ground Anchors.....	19

# Swing Set Assembly Manual

**Please read through the entire manual before starting.**

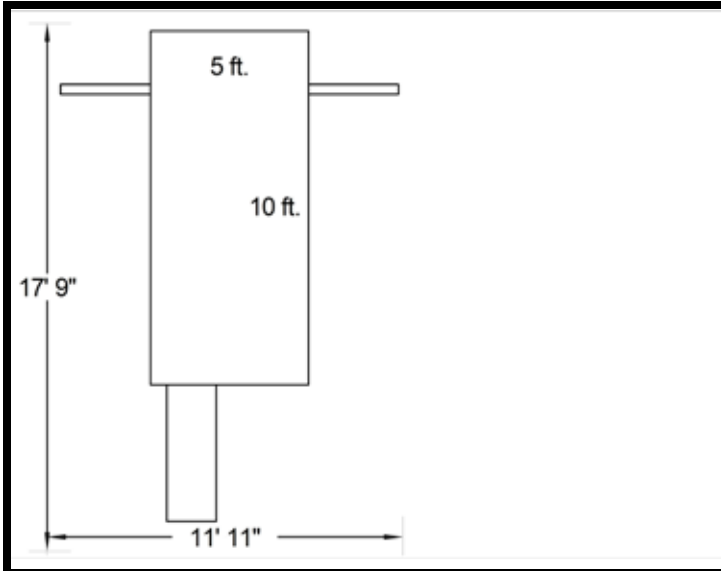
This assembly manual follows the construction of the Blue Sky Swings Olympic play system.

It is recommended that the entire instruction manual be read prior to beginning assembly.

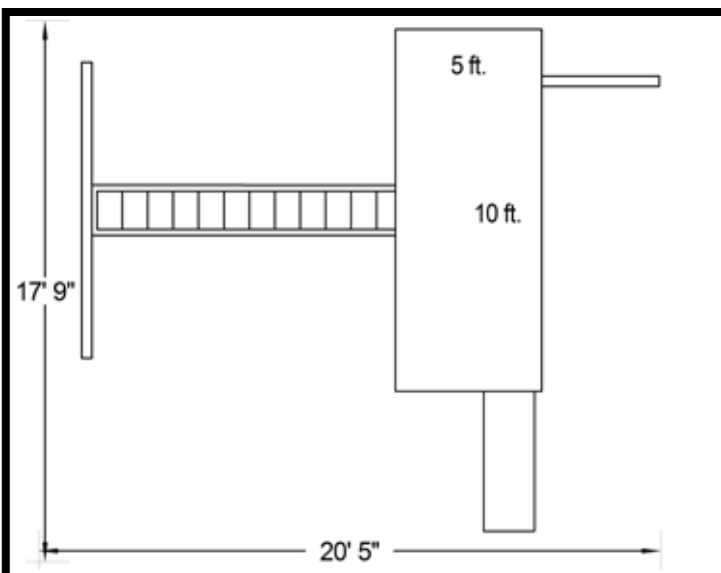
Note that you may not have chosen all available activity stations for your swing set, therefore some instructions contained herein may not be applicable to your installation.

## Site Selection & Planning

It is important that you select a level site for your swing set. If there is a grade, dig out enough so the ground rails of the completed platform assembly will be level. When using tools and ladders always follow the manufacturers' recommended safety guidelines.



**Olympic Trainer  
Site Plan**



**Olympic Runner/Olympic Climber  
Site Plan**

# Tools Needed



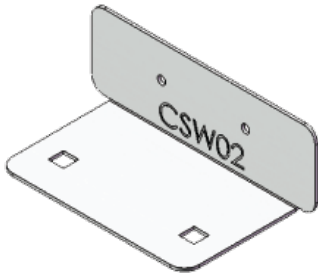
- |                     |   |   |                   |
|---------------------|---|---|-------------------|
| 1. Step Ladder      | 5. Cordless Drill/Screw gun                                       | 8. $\frac{7}{16}$ ", $\frac{1}{2}$ " & $\frac{9}{16}$ " Sockets                             | 11. Utility Knife |
| 2. Heavy Hammer     | 6. $\frac{3}{16}$ ", $\frac{1}{4}$ " & $\frac{3}{8}$ " Drill Bits | 9. Ratchet Wrench (impact wrench useful)  | 12. Vise Grip     |
| 3. Regular Hammer   | 7. Screw Driver Bits, #1 & #2                                     | 10. $\frac{3}{8}$ ", $\frac{7}{16}$ ", $\frac{1}{2}$ " & $\frac{9}{16}$ " Open End Wrenches | 13. Tape Measure  |
| 4. Dead blow mallet | Square, Phillips & Socket driver                                  |   |                   |



**Views of packaged swing kit**  
(Kit packaged for shipping)

**Actual kit size will vary depending on the swing package purchased**

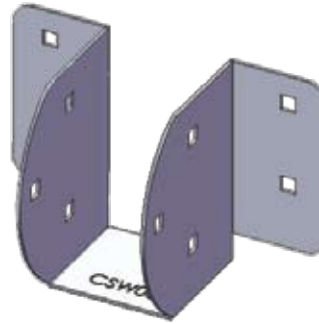
# Hardware & Parts



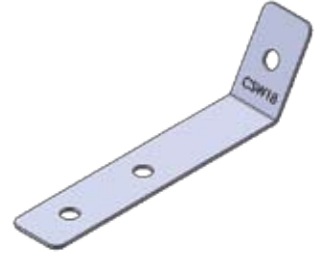
2" x 6" Corner end cap



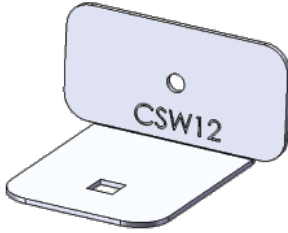
Angled support plate



Swing beam joist hanger



Swing beam support brace connector



2" x 4" Corner end cap



5" Two hole white washer



3 3/4" Two hole white washer



Carriage bolts, flat washers, and lock nuts



Hex head bolts, flat washers, and locknuts



Lag bolts and flat washers



1/4" Stainless steel philips drive pan head screw



#7 Square drive trim screws



#8 Square drive stainless steel white pan head screw



#14 (1/4") Stainless steel square drive pan head screw and flat washers

**Pictures are representative of fastener type. There may be multiple sizes of each.**

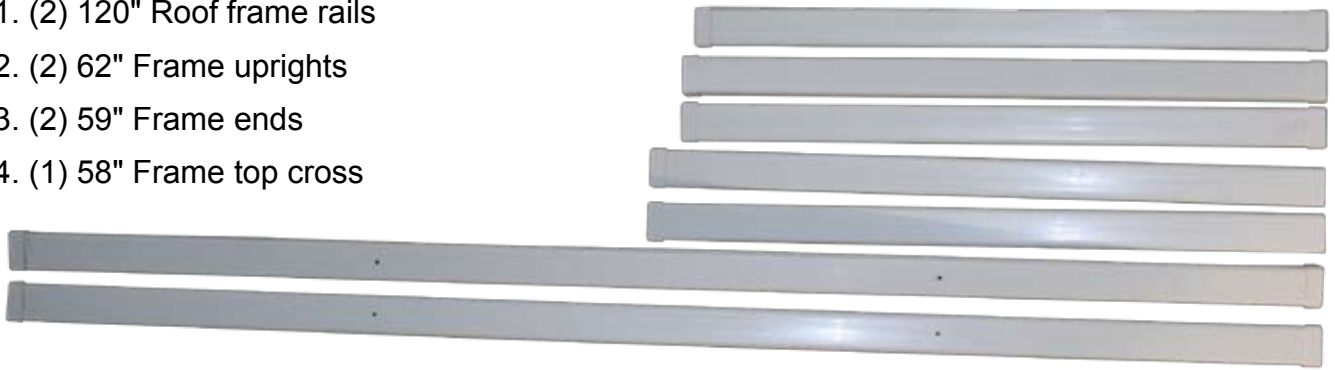
**Depending on the kit configuration you have chosen, it may not include all the hardware shown on this page. Not all pieces are used with every configuration.**

# Hardware & Parts continued

The following pieces are included in the roof frame:

## Roof Frame Pieces

1. (2) 120" Roof frame rails
2. (2) 62" Frame uprights
3. (2) 59" Frame ends
4. (1) 58" Frame top cross



Rock Wall Trim Board



Ground Rail Anchors



Temporary Supports

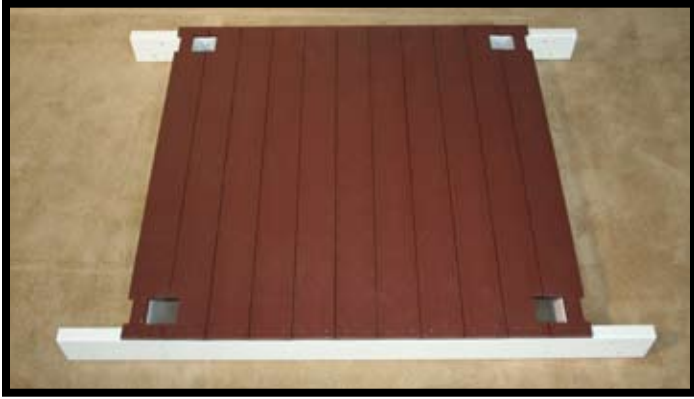


Canvas Top

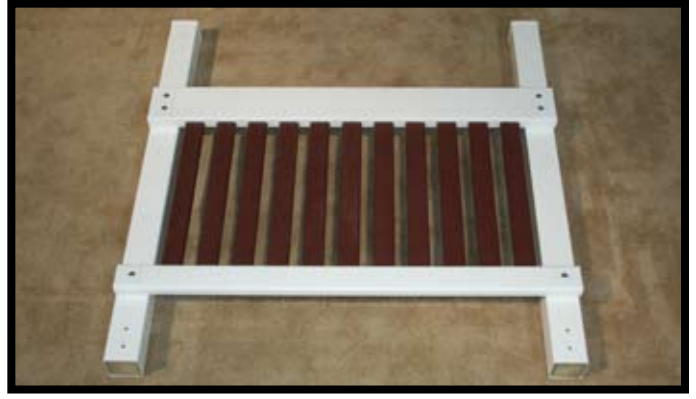


Ladder Safety Hand Rail

# Sub Assemblies



Platform Assembly



Side Rail Assembly



Platform Support Assembly  
Step Ladder Side



Platform Support Assembly  
Rock Wall Side



Activity Arm 1  
or 2 position  
(1 position  
shown)



Monkey Bar Ladder



Single Swing Beam Support



Monkey Bar w/3 Swing positions

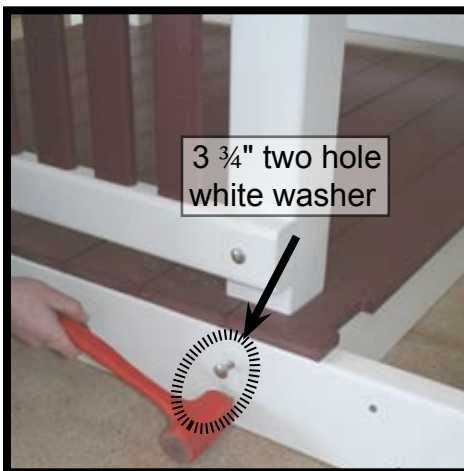


3 Position Single Swing Beam

# Main Platform Assembly



Insert side rail assemblies into platform and bolt together.



Attach the platform rails to the side rail posts using 3 3/4" two hole white washers and 3/8" x 6 1/2" stainless steel carriage bolts.



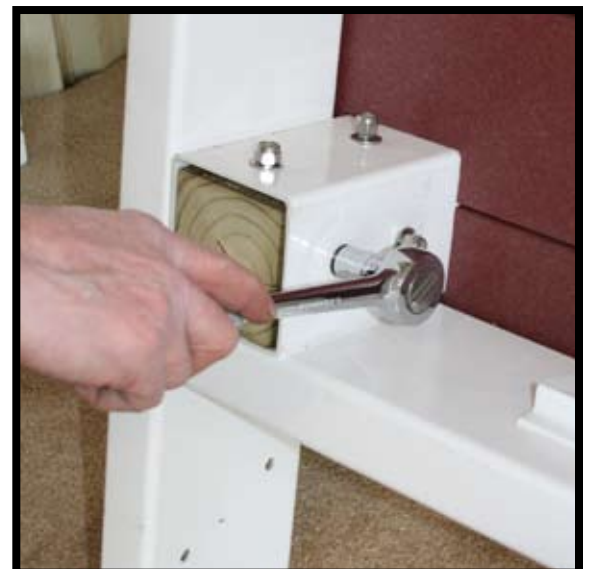
Attach the platform rails to the side rail posts using 5" two hole white washers and 3/8" x 6 1/2" stainless steel carriage bolts.

Do same for all four posts.

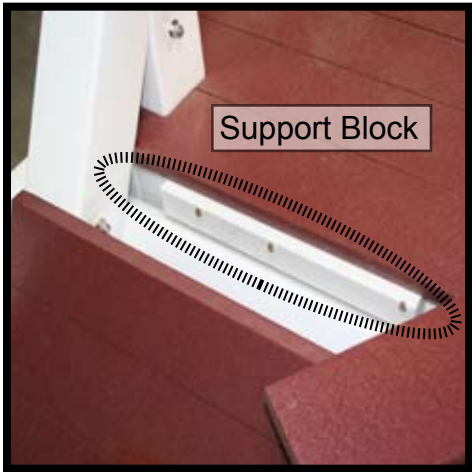


Stand platform with attached side rails on end.

Finish fastening side rail posts by using 3/8" flat washers and lock nuts.



# Platform Assembly Continued...



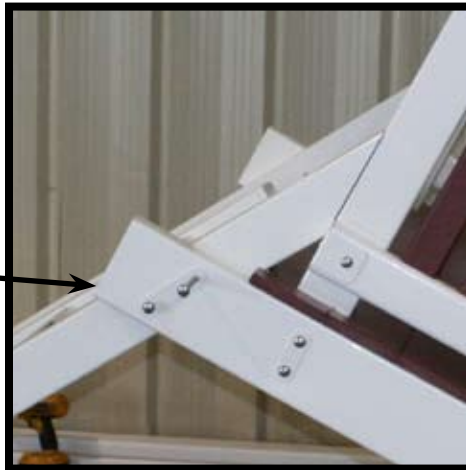
Before joining the platform supports to the platform, locate the side of the platform that has the support block for the rock wall trim board. The rock wall **must** be installed on this side.



Use a 5" two hole white washer and position two  $\frac{3}{8}$ " x 6  $\frac{1}{2}$ " stainless steel carriage bolts in the deck rail as shown.



Position the platform support assembly against the platform as shown and drive one of the  $\frac{3}{8}$ " x 6  $\frac{1}{2}$ " stainless steel carriage bolts through the support post. Repeat on other side.



Extend platform assembly into final position and drive a second  $\frac{3}{8}$ " x 6  $\frac{1}{2}$ " stainless steel carriage bolt through the support post. Repeat on other side.

## Platform Assembly Continued...



Support the platform using the temporary supports included with your kit.



Position the second platform support as shown and fasten with 5" two hole white washers,  $\frac{3}{8}$ " x  $6\frac{1}{2}$ " stainless steel carriage bolts, flat washers, and lock nuts.



Use a  $\frac{3}{8}$ " x 5" stainless steel lag,  $3\frac{3}{4}$ " two hole white washer, and a flat washer to attach the platform support post to the side rail post. Do this on all 4 posts.



Line up the platform support posts and the side rail posts. Using a  $\frac{1}{4}$ " bit to make drill pilot holes in the side rail posts as shown.

## Add the Rock Wall Trim Board



Position the rock wall deck trim board over the support block and the edge of the rock wall.



Fasten the 25 1/8" rock wall trim board using #7 x 2 1/4" square drive trim head screws. *Be careful to align the screws on the front edge at the same angle as the rock wall so they do not penetrate the surface of the rock wall.*



A hammer can be used to flatten the dimples that are made when the screws penetrate the deck surface.

## Add the Roof Frame



Connect the 120" roof frame rails to the side rail posts using 3/8" x 4" stainless steel lags and flat washers.



Connect the 59" frame uprights to the side rail and the 120" roof frame piece using 1/4" x 3" stainless steel lags and flat washers.



Fasten the 58" frame top piece to the 59" frame uprights using 1/4" x 4" stainless steel lags and flat washers.



## Add the Platform Safety Railing



Fasten the platform safety rail using the 5" two hole white washers,  $\frac{3}{8}$ " x 6  $\frac{1}{2}$ " stainless steel carriage bolts, flat washers, and lock nuts as shown.

## Add an Activity Arm



Place activity arm (2 position arm shown) on side where it is to be installed and begin the  $\frac{3}{8}$ " x 8" stainless steel carriage bolts by inserting them through the 5" two hole white washers and into the activity arm.



Lift activity arm into place and use a dead blow mallet to drive the 8" carriage bolt through the activity arm and the side rail posts. Fasten with flat washers and lock nuts.

**If you are not installing an activity arm you must fasten a platform safety rail on both sides.**

# Assembling the Single Swing Beam Support



The swing beam support includes the following pieces:

1. (1) 90" support post
2. (2) angle braces
3. (1) ground rail
4. (2) swing beam support brace connectors
5. (3) two hole white washers
6. (2) angled support plates
7. (1) hardware pack



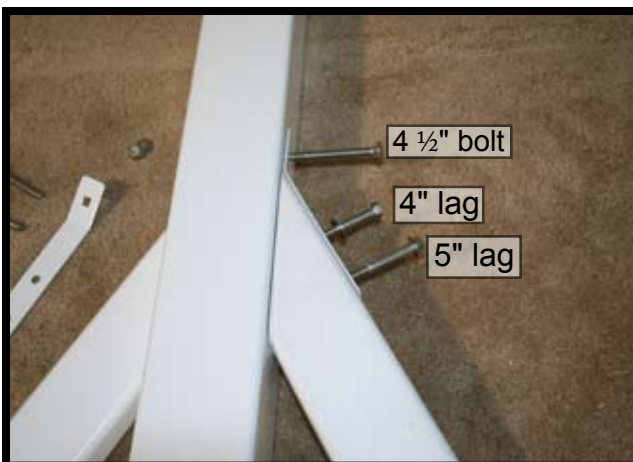
Lay out parts as shown



Fasten the ground rail to the post using the 3 3/4" two hole white washer, 3/8" x 6 1/2" stainless steel, carriage bolts, flat washers, and lock nuts.



Fasten the ground rail to the angle braces using the 5" two hole white washers, 3/8" x 6 1/2" stainless steel, carriage bolts, flat washers, and lock nuts.



Fasten the 2 angled braces to the support post using the swing beam support brace connectors, a 3/8" x 4 1/2" stainless steel, carriage bolt, flat washer and lock nut, and the 3/8" hex head lags and flat washers.



Using 3/8" x 4 1/2" stainless steel carriage bolts, flat washers, and lock nuts, fasten the angled support plates to the top of the support post.

# Assembling the Monkey Bar Ladder



The swing beam support includes the following pieces:

1. (1) ladder assembly
2. (2) angle braces
3. (1) ground rail
4. (2) swing beam support brace connectors
5. (4) two hole white washers
6. (4) angled support plates
7. (1) hardware pack



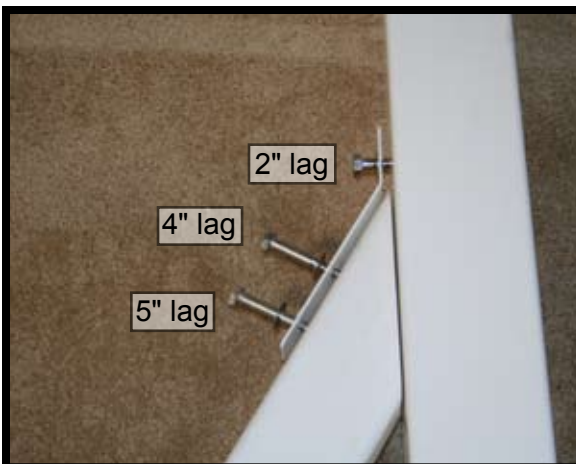
Lay out parts as shown



Fasten the ground rail to the ladder using the 3 3/4" two hole white washers, 3/8" x 6 1/2" stainless steel, carriage bolts, flat washers, and lock nuts.



Fasten the ground rail to the angle braces using the 5" two hole white washers, 3/8" x 6 1/2" stainless steel, carriage bolts, flat washers, and lock nuts.



Fasten the 2 angled braces to the support posts using the swing beam support brace connectors, and 3/8" stainless steel lags, and flat washers. See picture on left for correct lag size placement.



Using 3/8" x 4 1/2" stainless steel carriage bolts, flat washers, and lock nuts, attach the angled support plates to the top of the monkey bar ladder.

# Adding the Monkey Bar and/or Swing Beam



Locate the swing beam joist hangers, 3 3/4" two hole white washers and the 2 1/2" stainless steel carriage bolts.



Insert the 3/8" x 2 1/2" stainless steel carriage bolt through the pre-drilled holes in the top of the side rail and the 3 3/4" two hole white washers.



Mount joist hangers on the outside of the top rail and begin the flat washers and lock nuts. *(Do not tighten)*



Bolt the swing beam and the swing beam support *(or the monkey bar and the monkey bar ladder)* together with the angled support plates using 3/8" x 4" stainless steel carriage bolts, flat washers, and lock nuts.

If you are assembling a monkey bar, the lock nuts should face toward the outside.



Fasten the monkey bar or swing beam to the joist hangers using 3/8" x 4" stainless steel carriage bolts, flat washers, and lock nuts. The lock nuts should face toward the outside.



*It will be easier to place the monkey bar or swing beam into the joist hangers if you position a step ladder next to the assembled frame, and while lifting the monkey bar from underneath, walk up the ladder until you are able to rest the monkey bar in the joist hangers. It is recommended that there are 2 people to help with this step. One person will have to lift the monkey bar onto the joist hangers while the second person assists by moving the ladder end into position.*

# Hang the 8 ft. Rope Ladder



Hang the rope ladder over the activity arm or the platform safety rail as shown.



Fasten rope ladder to the activity arm as shown using #8 x 3" square drive stainless steel screws.



Pull rope back and feed ladder down through as shown.



Pull rope tight.



Feed the rope end through the base block and knot.



Finish installation by starting two 1/4" x 3" screws, and pushing the base block down with your full weight. Drive screws into ground rail.



If the rope is too long, wrap tightly with black tape. Then with a utility knife, cut into the tape to separate the excess rope.



# Installing a Sliding Board



Position slide at center of activity opening and use two  $\frac{1}{4}$ " x  $1\frac{1}{4}$ " stainless steel screws and flat washers to fasten slide to deck platform.

**Note: there are no flat washers used with the 10 ft. wave slide.**



1. Use a  $\frac{1}{4}$ " drill bit and drill three holes in the slide as shown. *Do not drill through deck platform.*
2. Position slide in the center of an activity opening and over the ground mounting block.
3. Remove slide and spike down the ground mounting block.
4. Fasten slide in activity opening and use three  $\frac{1}{4}$ " x  $1\frac{1}{4}$ " stainless steel screws and flat washers, to fasten slide to deck platform.

# Install the Step Ladder Safety Hand Rail



Hold hand rail at desired location and drill pilot holes using a  $\frac{1}{4}$ " drill bit.



Fasten to the platform frame using  $\frac{3}{8}$ " x  $1\frac{1}{2}$ " stainless steel lags.



## 3 Chain Swivel Tire Swing



Install the swivel mount in the pre-drilled pilot holes on the center platform floor joist as shown. Using  $\frac{3}{8}$ " x 2" lags and flat washers

Hang tire swing as shown.

## Install the Canvas Roof Cover



Slide the 62" frame end pieces into the canvas cover.



Lay the canvas over the top, then fasten the frame end pieces to the frame side pieces using  $\frac{1}{4}$ " x 4" stainless steel lags and flat washers.



# Fasten Rock Wall Safety Rope



Attach the safety climbing rope by making a slip knot and looping it around the top rail. Then put the other end through the loop and pull snug.



Feed the rope end through the hole at the bottom of the rock wall and make a knot large enough to keep it from being pulled back to the other side.

## Slip Knot Instructions



Make two loops by folding a loop under.



Pass the left loop through the right loop.



Tighten the knot.

# Installing the Ground Anchors



Using a heavy hammer, drive anchors into ground as shown.



Drill pilot holes with a 1/4" bit.



Use a 3/8" x 1 1/2" stainless steel hex head lag, and flat washer to fasten the single beam support/monkey bar ladder to the ground anchors.